



# Sabtuan Adult Education Services and Sabtuan Regional Vocational Training Centre

**Cree School Board Regional General Assembly  
Presentation by: Pierre Desjardins and Réjean Gascon**

**Date: November 9, 2016**



# Table of Contents

- SAES Overview
- 2015-2016 Year in Review
- 2016-2021 Strategic Action Plan Initiatives
  - Theme 1: Educational Success
  - Theme 2: Student, Parent and Community Engagement
- Challenges
- Conclusion
- Questions



# SAES Overview

Sabtuan Adult Education Services (SAES) is ...

- 557 students enrolled in General Education;
- 191 students enrolled in Vocational Training;
- 99 students enrolled in studies at the SRVTC;

# SAES Overview (cont'd)

Supported by ...

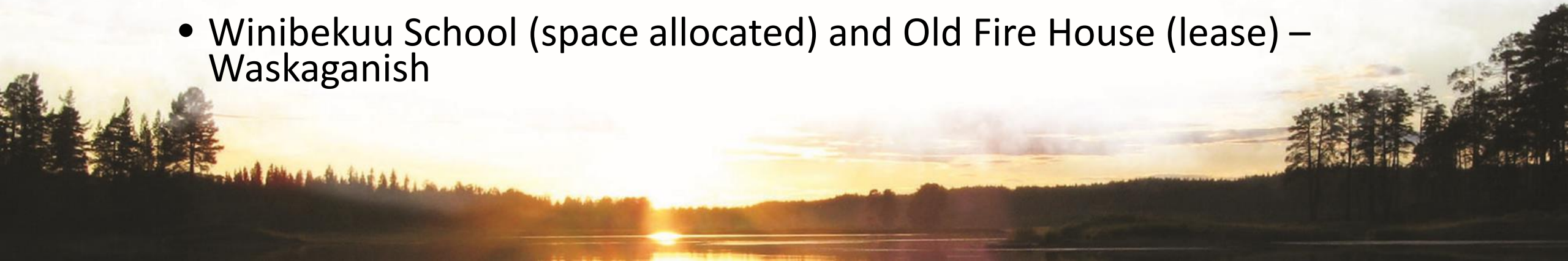
27 Teachers (General Education and Vocational Training);  
19 Support Staff;  
9 Professionals; and  
6 Managers



# SAES Overview (cont'd)

## Working at ...

- SAES Building – Whapmagoostui
- JBES-Adult Education Sector – Chisasibi
- Mayaupui Training Institute (lease) – Wemindji
- SAES Building – Eastmain
- Winibekuu School (space allocated) and Old Fire House (lease) – Waskaganish



# SAES Overview (cont'd)

Working at (cont'd) ...

- SAES Building and Old Band Offices (lease) – Nemaska
- Voyageur Memorial School (space allocated) – Mistissini
- Head Office – Mistissini
- SAES Building (lease) – Oujé-Bougoumou
- SRVTC – Waswanipi





# SAES Overview (cont'd)

## SERVICES PROVIDED

### Academic Upgrading (General Education Sector):

- Provides courses to obtain – Diploma Secondary Studies ([DSS](#));
- Provide courses (prerequisites) to entry Vocational Training programs;
- Provide courses (prerequisites) to entry College studies;

# SAES overview (cont'd)

## SERVICES PROVIDED (cont'd)

*30+ different programs  
(10 years)*

### Vocational Training Sector:

- Provides programs leading to a trade – Diploma Vocational Studies (**DVS**);
- Provides specialized Vocational Training programs – enhancing employability (*leading to a **Skill Training Certificate***);
- Provides specialised courses to enhance actual competencies (*leading to an **Attestation Vocational Studies***);



# SAES overview (cont'd)

## SERVICES PROVIDED (cont'd)

### Complementary Services:

- Assists individuals to identify **work functions** and **academic paths** to obtain the targeted Diploma: vocational and/or technical levels;
- Assists experienced individuals in “officially” recognizing their competencies for a specific program of study – **Recognition of Acquired Competencies (RAC)**;
- Provide **Customized Trainings** to respond at specific needs in any Cree organizations.



# 2015-16 Review

## Sabtuan Regional Vocational Training Centre (SRVTC)

- Vocational Training programs – Diversified offer;
- Student Residence on site – newly furnished;
- Well equipped, state of the art workshops and classrooms – **investment of 2.5 millions from the last 3 years;**
- Cafeteria on site – food comparable to mining sector!

# 2015-16 Review (cont'd)

## Sabtuan Regional Vocational Training Centre (SRVTC)

- HEO (Heavy Equipment Operator) – **safe site for practicum**
- Heavy Equipment Mechanics
- Surveying and Topography
- Professional Cooking – **annual collaboration with ITHQ**
- Welding (**GMAW & FCAW**)
- Recreation Leadership
- Warehouse Management





# 2015-16 Review (cont'd)

## Sabtuan Regional Vocational Training Centre (SRVTC)

Welding

Equipped for  
the mining industry  
(GMAW & FCAW)

HEO

Bulldozer D6  
(Caterpillar)

Surveying Topo.

Tools used in  
the industry  
(Trimble)

Health and Safety

COMPLIANT



# 2015-16 Review (cont'd)

Develop our expertise in Construction field – Carpentry / Painting / Plastering / Northern Building Maintenance / Electricity;

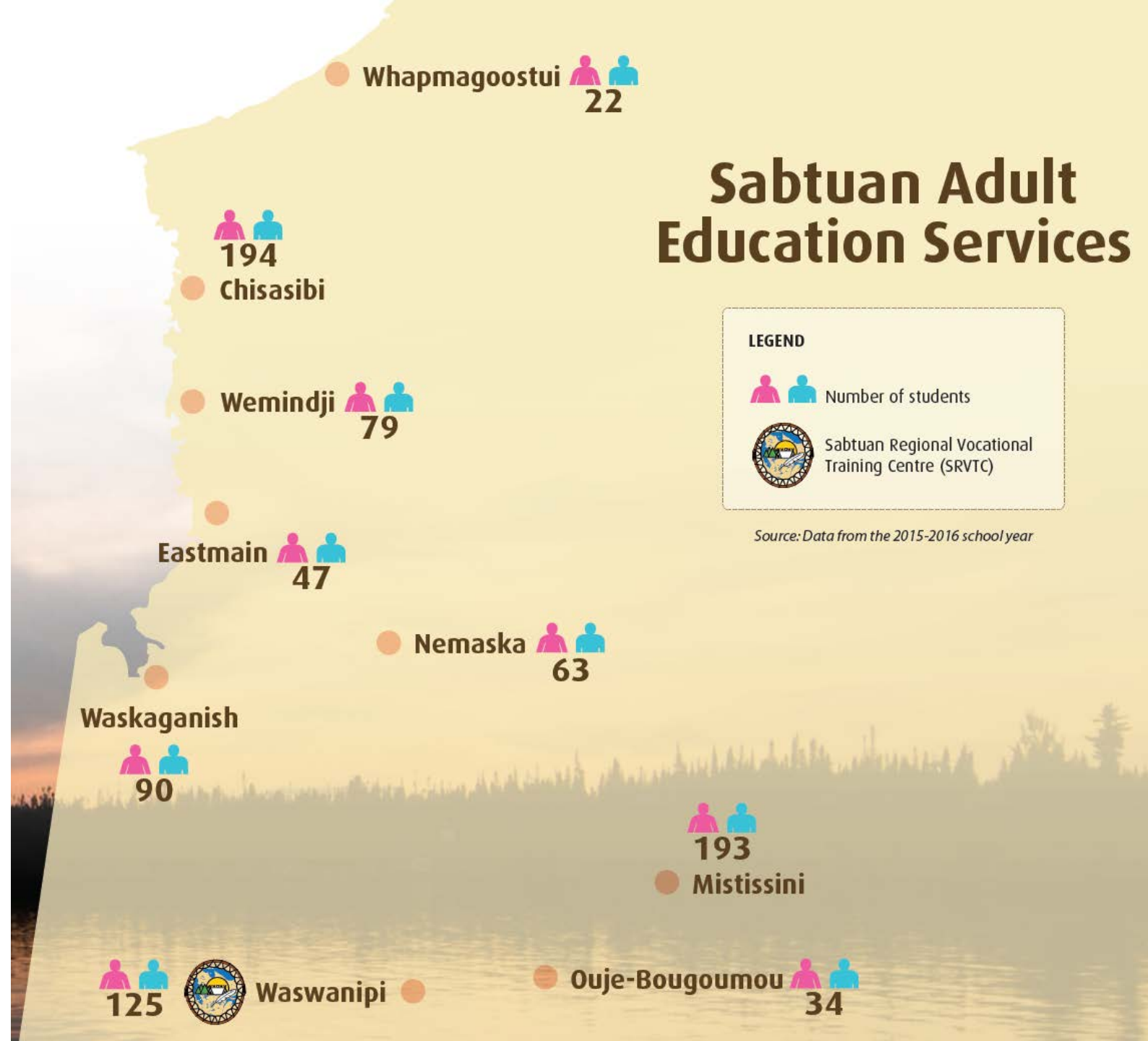
Deepened our expertise on *READINESS* – preparing student for Vocational Training and Colleges – Essential Skills / Life Skills;

Diversify General Education programs;

Enhanced collaboration to increase employability– Carpentry/CCQ

# Student Enrollment

## Sabtuan Adult Education Services



# 2015-16 Review (cont'd)

<b>Student Enrollment</b>			
<b>Sector</b>	<b>2014-2015</b>	<b>2015-2016</b>	<b>Difference (+/-)</b>
General Education	465	557	92
Vocational Programs	152	158	6
SRVTC	107	99	-8
Partnerships	54	33	-21
<b>Total:</b>	<b>778</b>	<b>847</b>	<b>9%</b>

# 2015-16 Review (cont'd)

2015-2016 General Education	Female	Male	Total
<b>Number of Students</b>	<b>308</b>	<b>249</b>	<b>557</b>
<b><u>Areas of Enrollment</u></b>			
Pedagogical Support	2	2	4
Literacy	2		2
Presecondary	4	8	12
First Cycle Secondary	44	33	77
Second Cycle Secondary	223	144	367
Vocational Education Preparation	66	77	143
Post Secondary Studies Preparation	21	19	40
<i>Note that a student may be enrolled in multiple areas</i>			



# 2015-16 Review (cont'd)

Community	Registered	Graduates	Graduation Rate
Chisasibi	79	4	5%
Eastmain	45	3	7%
Mistissini	96	2	2%
Nemaska	30	5	17%
Ouje-Bougoumou	16	0	0%
Waskaganish	59	0	0%
Waswanipi	72	3	4%
Wemindji	47	1	2%
Whapmagoostui	17	0	0%
	<b>461</b>	<b>18</b>	<b>4%</b>

# 2015-16 Review (cont'd)

Type	Program	Community	Registered*	Graduates	Graduation Rate
AVS	Construction Business Management	Chisasibi	10	5	50%
DVS	Secretarial Studies - Group 1	Chisasibi	7	4	57%
DVS	Machine Operations, Mineral and Metal Processing	Mistissini	12	6	50%
DVS	Secretarial Studies	Mistissini	13	4	31%
DVS	Home Care Assistance	Nemaska	7	5	71%
STC	Mécanique de machinerie mobile de mines/Mining Mobile Mech	Waswanipi - SRVTC	12	9	75%
DVS	Northern Heavy Equipment Operations - Group 1	Waswanipi - SRVTC	12	10	83%
AVS	Starting a Business	Waswanipi - SRVTC	15	6	40%
DVS	Accounting	Wemindji	11	0	0%
Other	CCQ Training	Wemindji	6	4	67%
STC	Soudage semi-automatique GMAW et FCAW/Semi-automatic Wel	Wemindji	8	5	63%
DVS	Ore Extraction	Matagami	12	10	83%
DVS	Trucking Class 1	Waswanipi - SRVTC	11	9	82%
<b>Total:</b>			<b>136</b>	<b>77</b>	<b>57%</b>

AVS: Attestation of Vocational Specialization; DVS: Diploma of Vocational Studies; STC: Skills Training Certificate; Other: Customized Training

\* Number of registered students at the beginning of the program.



## 2015-16 Review (cont'd)

- 847 students registered in Sabtuan Adult Education Services;
- SRVTC fully functional – Health and Safety compliant
- New attractive training offer: Surveying and Topography, Warehouse Management, Welding, Recreation Leadership, Construction Management
- New equipment: HEO Simulators and Machinery, Welding and Mechanics



# 2015-16 Review (cont'd)

## Issues/Solutions

### ➤ Recruitment of students remains a challenge

- Attractive training programs implemented;
- Teachers to promote and recruit;
- Associate programs to work placement.



# 2015-2016 Year in Review (cont.)

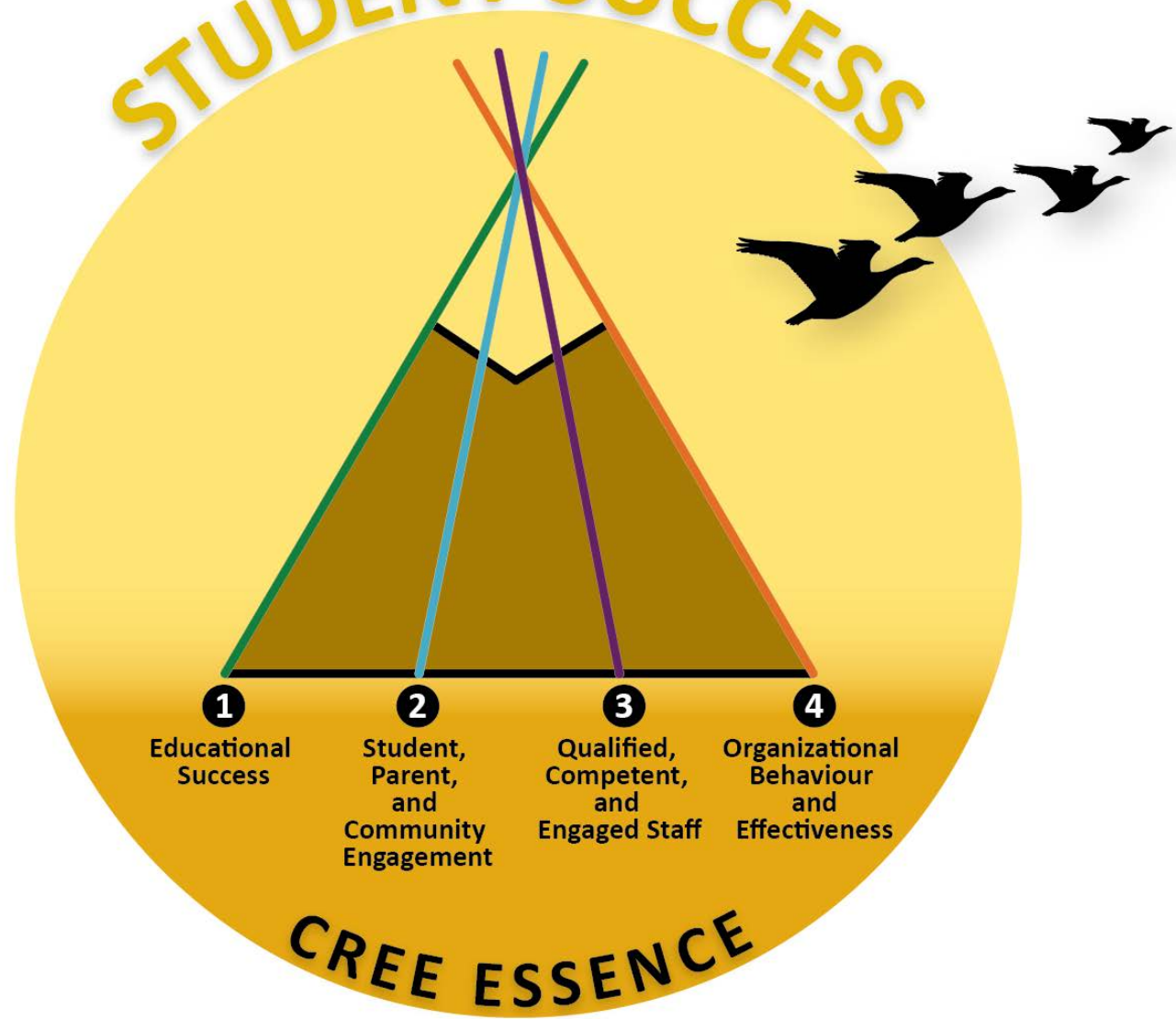
## Issues/Solutions

### ➤ Students holding pre-requisites – Vocational Training / College

- Essential and Life Skills training prior and during the core training;
- Upgrading courses during vocational training;
- Enhancing skills for studies.



# STUDENT SUCCESS



- 1 Educational Success
- 2 Student, Parent, and Community Engagement
- 3 Qualified, Competent, and Engaged Staff
- 4 Organizational Behaviour and Effectiveness

# CREE ESSENCE



# 1 EDUCATIONAL SUCCESS

## 1.2 Actively motivate and engage students in their learning

- 1.2.1 By 2018, all vocational programs will include educational and employment readiness workshops;
- 1.2.2 By 2017, trainings will include Essential and Life skills' training components



# 1 EDUCATIONAL SUCCESS

## 1.3 Effectively communicate with and receive feedback from students

1.3.1 By 2017, ensure that SAES in collaboration with CHRD reports on job placement for graduates;

1.3.2 By 2016, ensure that all General Education students own an Individualized Learning Plan





# 1 EDUCATIONAL SUCCESS

1.4 Design learning plans that reflects the needs of all students:

1.4.1 By 2016, identify, develop and present attractive programs fostering quality teaching and learning





# 1 EDUCATIONAL SUCCESS

1.5 Become an effective learning-centered organization:

1.5.1 By 2019, implement at least one annual initiative enhancing student-centered learning



# 1 EDUCATIONAL SUCCESS

## 1.6 Ensure healthy, safe and sustainable facilities:

1.6.1 By 2016, be 100% Health and Safety compliant at SRVTC

1.6.2 By 2019, ensure that six (6) communities have the required space for training



## 2 STUDENT, PARENT AND COMMUNITY ENGAGEMENT

2.6 Establish and nurture mutually beneficial relationships with employers, industry and community groups:

2.6.1 Establish and maintain fluent communication with MEES, CHRD, Students and Industries

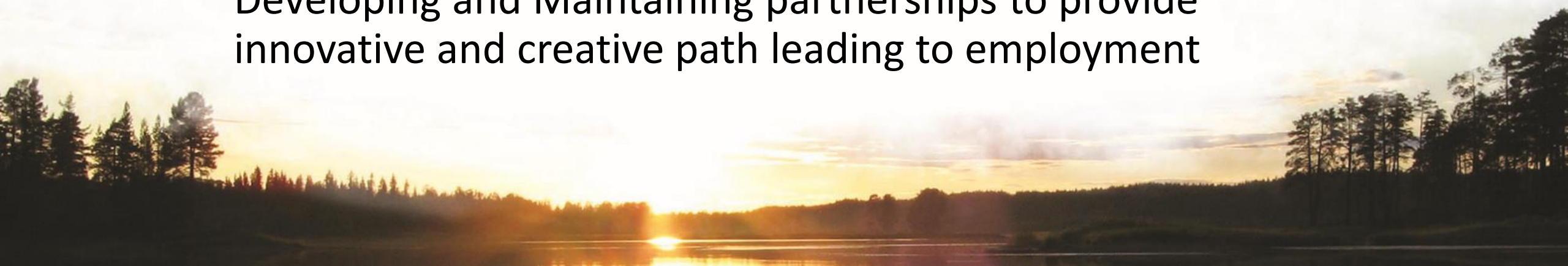


# Challenges



Being pro-active by identifying and offering quality programs that support Eeyou Istchee social/economic development

Developing and Maintaining partnerships to provide innovative and creative path leading to employment



# Conclusion

*“Culture is the product of social life and human social activity. That is why just by raising the question of the cultural development of behaviour we are directly introducing the social plane of development” (Vygotsky)*





# Questions?

- Pierre Desjardins
- Director SAES
- 514-701-7583
- pdesjardins@cscree.qc.ca
- Réjean Gascon
- Director SRVTC
- 514-709-6927
- rgascon@cscree.qc.ca

Meegwetch. Thank you. Merci. 😊