



# Post Secondary Student Services

**Cree School Board Regional General Assembly  
Presentation by Jane L. Blacksmith, Director**

**November 09, 2016**



# Introduction

## Who we are?

Post-Secondary Program was established pursuant to paragraph 16.0.25 of the JBQNA which provides that a Post-Secondary Assistance Program can be provided by the CSB in accordance with Agreements entered into between the CSB, Canada, and Québec.

## Where are our offices?

*Location*

### Main Office

Montreal, Québec

### Satellite/Field Office

Gatineau, Québec

*Role*

The Montreal office is where activities in support of students takes place for financial and educational support services

The satellite or field office was designed to provide academic and social support students since a large number of students attend colleges and universities



# What do we do?

## CSB Post Secondary Student Services (PSSS)

Provides financial and educational assistance to students to acquire professional accreditation and enrolled in post secondary level of education

### Levels of Education

#### College

Quebec CEGEP (Collège d'enseignement général et professionnel)    Community College

- Diploma
- DEC (Diplôme d'études collégiales)
- Certificate

#### University

- Bachelor
- Masters
- Doctorate

#### Vocational

- Adult Secondary Level Off-Community programs for Diploma of Vocational Studies

*PSSS provides same level of assistance insofar as the program is not available on-community training centers*

### PS Full-Time Student Financial Assistance

A

- Living
- Lodging

B

- Child Care Assistance

C

- Tuition and School Supplies
- Textbooks (Other mandatory materials)

D

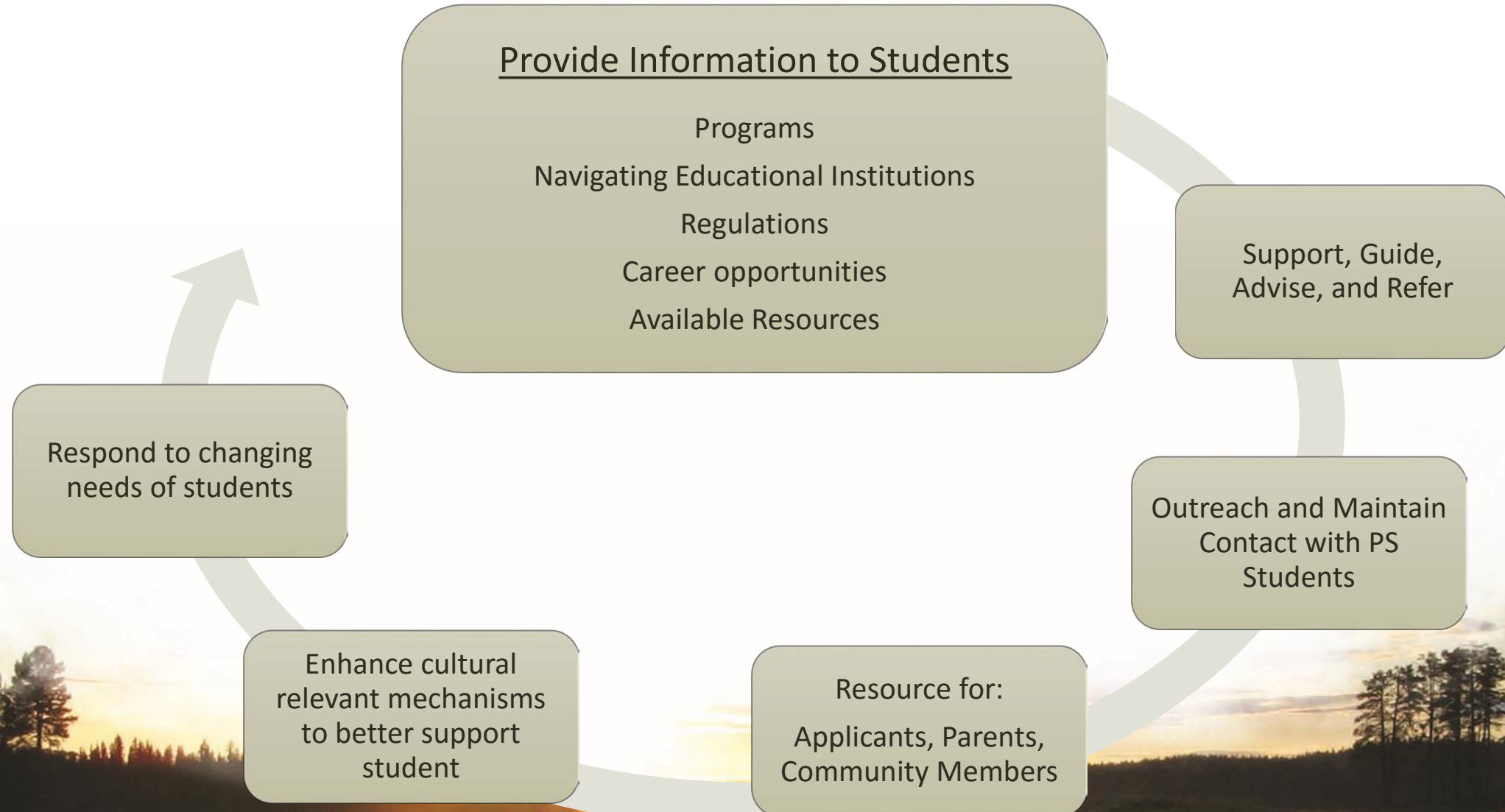
- Travel (arrangements and travel costs)

E

- Moving Assistance



# Main Responsibilities to Students





# CSB PS Action Plan 2010-15

2010

2015

Much of our efforts in last 5 years have been centered in building a foundation to improve the quality of Post Secondary Support services to students to position the department to create talent, professional qualifications to meet the demands of the Cree Nation

Re-organize service industry and create student communication tools

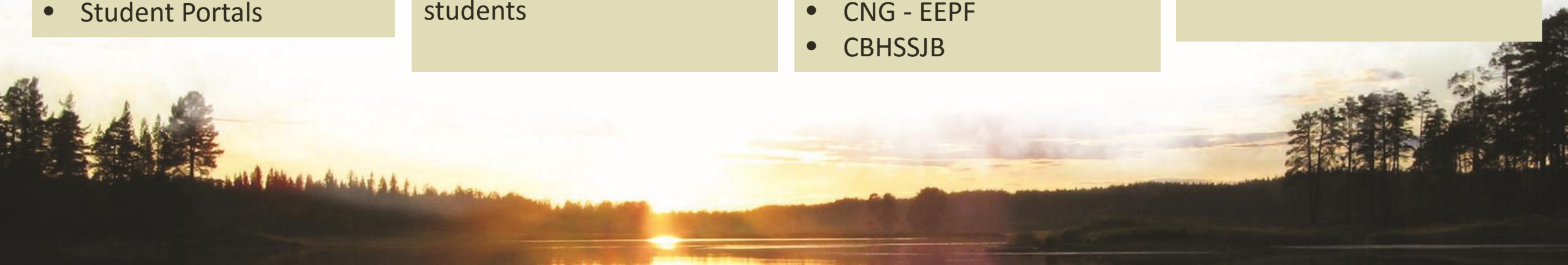
- Online Application
- Direct Deposit
- Student Portals

Student data assessment to: results, success, and return on investment and using data to better serve students

Partnerships & respond to Cree Entities to promote employment opportunities

- CHRD
- CNG - EEPF
- CBHSSJB

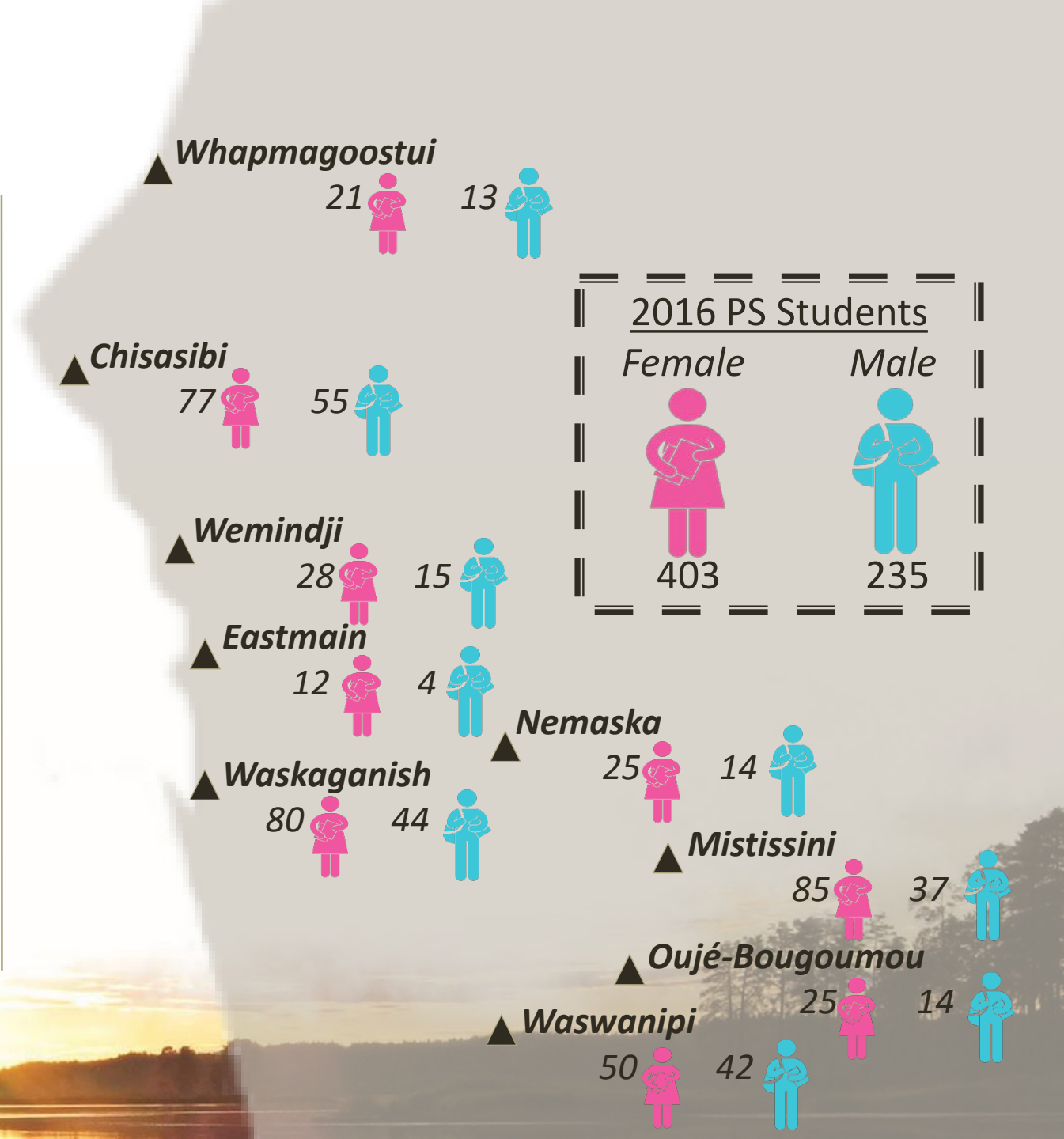
Marketing strategies to create visibility of PSSS services to access financial and education assistance program





# CSB PS Enrollments 2015-16

<u>Community</u>	<u>2014-15</u>	<u>2015-16</u>	<u>Annual Change</u>	<u>Annual Change %</u>
Chisasibi	110	132	22	20%
Eastmain	17	16	-1	-6%
Mistissini	124	122	-2	-2%
Nemaska	20	39	19	95%
Oujé-Bougoumou	43	36	-7	-16%
Waskaganish	135	124	-11	-8%
Waswanipi	88	92	4	5%
Wemindji	31	43	12	39%
Whapmagoostui	32	34	2	6%
<b>Total</b>	<b>600</b>	<b>638</b>	<b>38</b>	<b>6%</b>

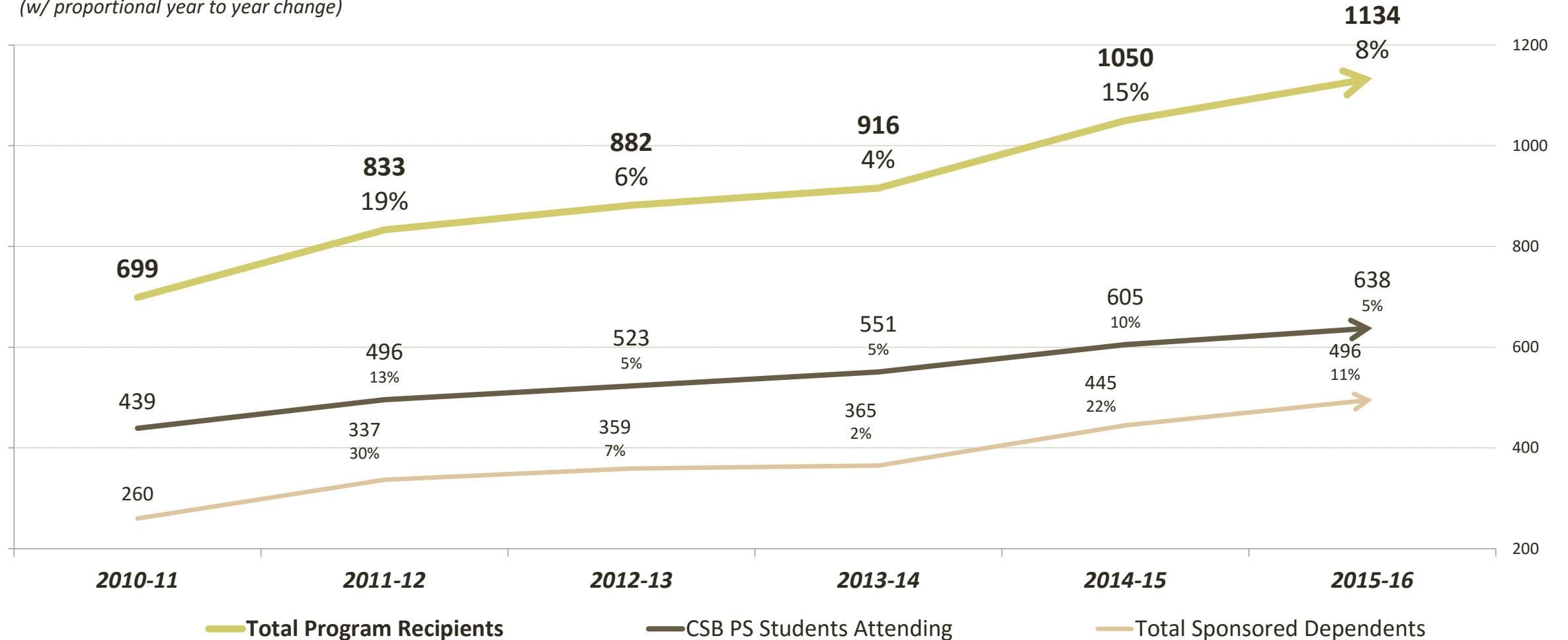




# Program Growth and Trends

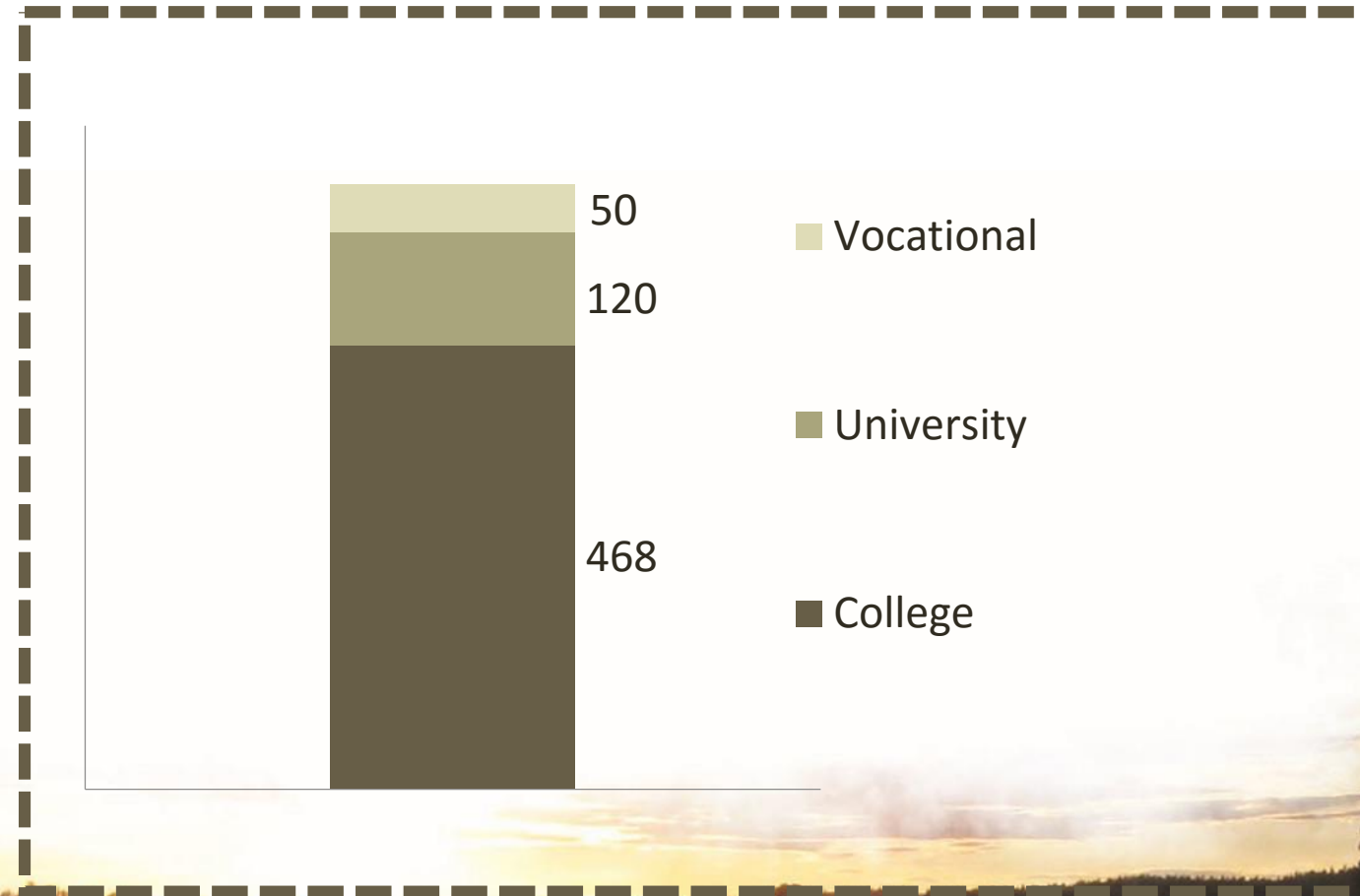
## CSB PSSSP Student Enrollment Summary 2015 to 2016

(w/ proportional year to year change)





# 2015-16 Post Secondary Students Educational Institution Levels

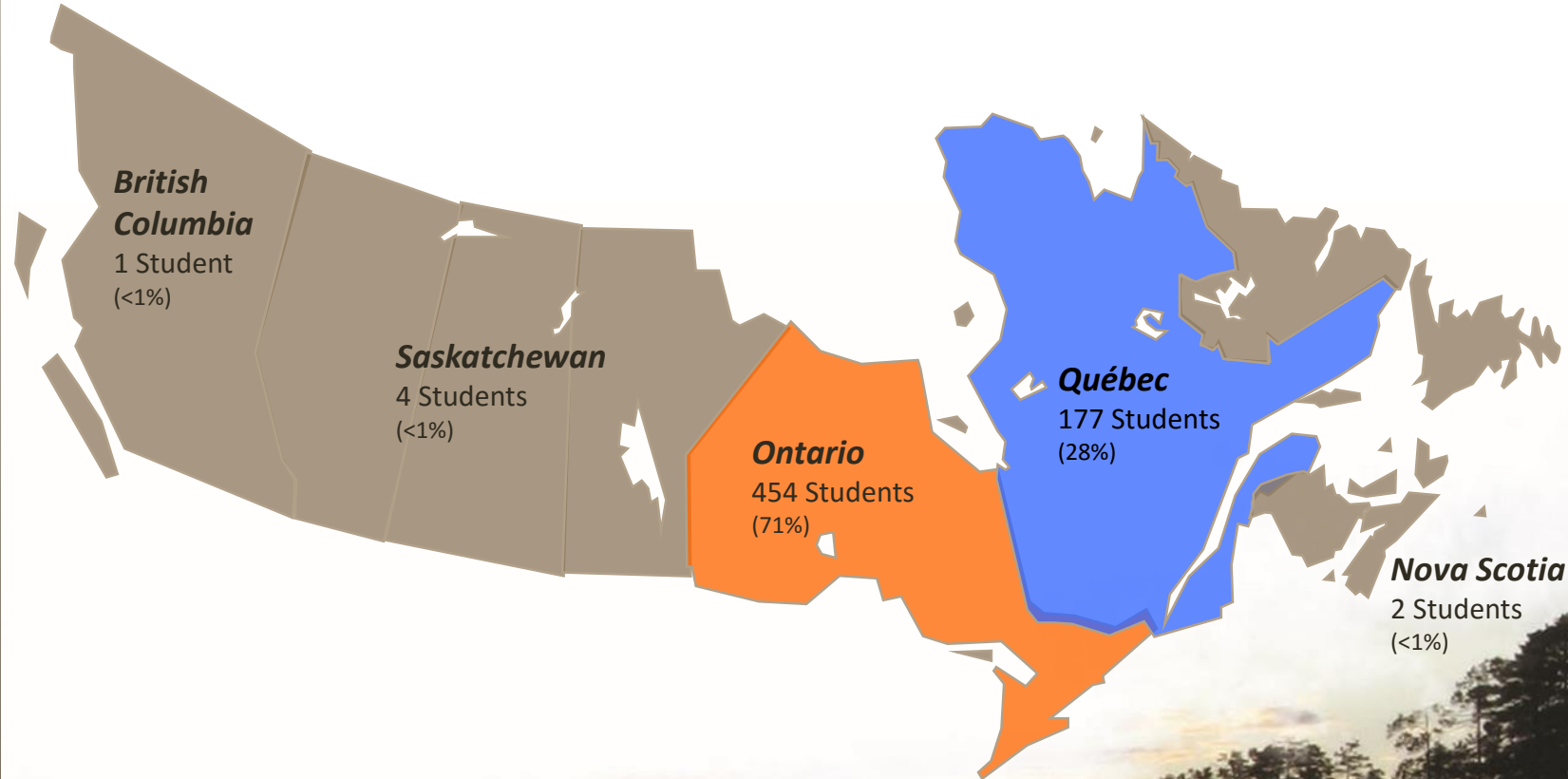
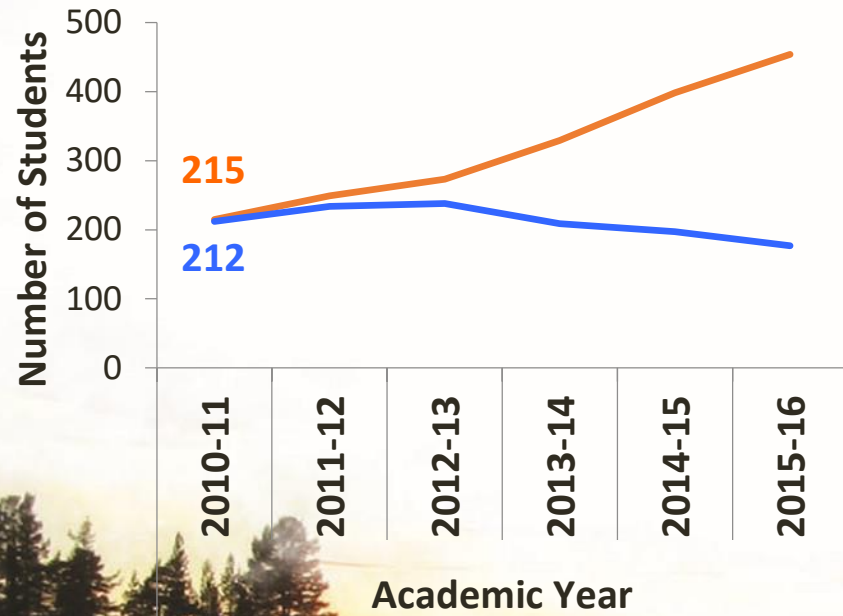




# CSB PSSS 2015-16 Enrolments Across Canada

## PS Student Location Facts

- 99% of our students are either in **Québec** or **Ontario**. 6 years ago, enrollments were equal in these two provinces.

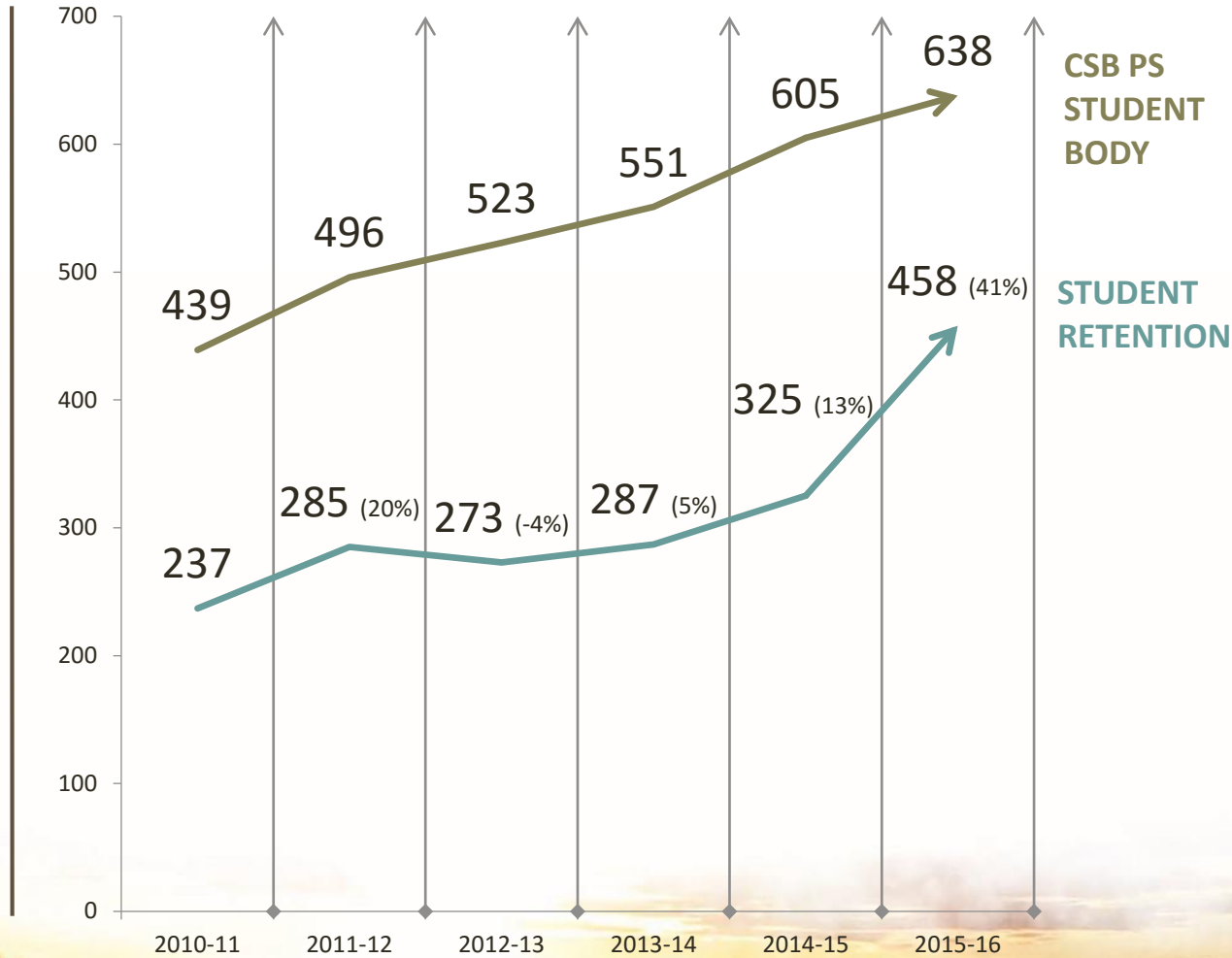
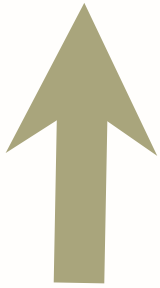




# CSB PS Student Retention Rate

Proportion 6 year Change in PS Student Retention:

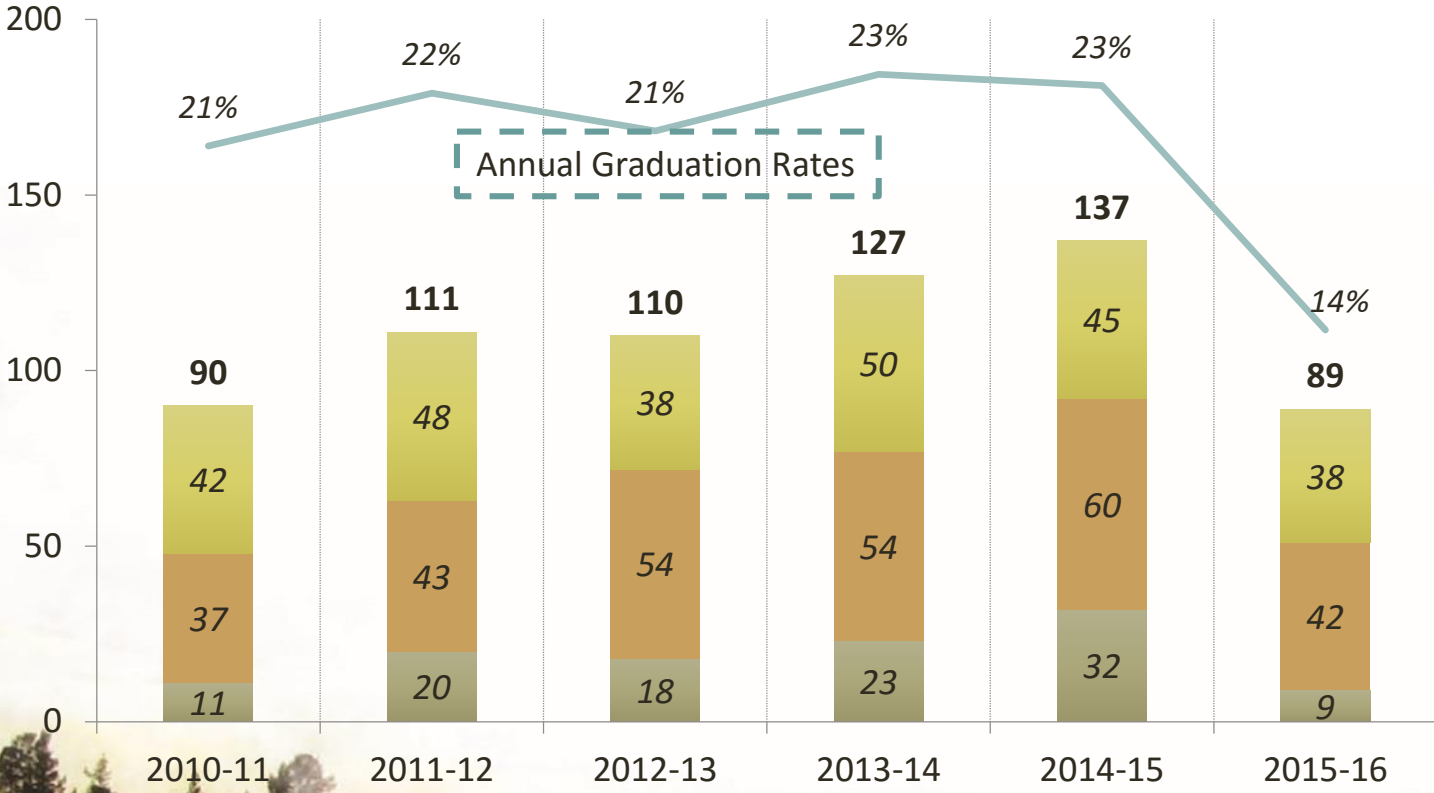
- **2015-16**      **72%**
- **2010-11**      **54%**





# Graduation Rate and Course Completion Summary

**CSB PS Programs Completed in Last 6 Years  
(with annual graduation rates)**



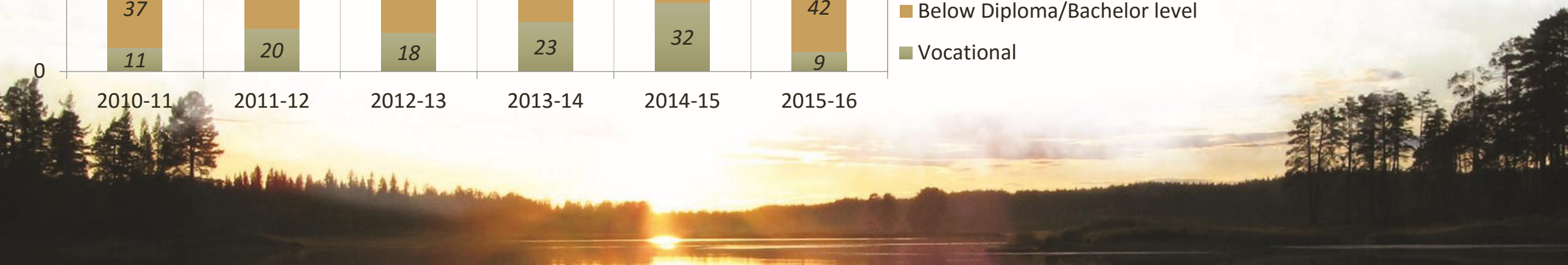
**2015-16 Highest Accreditations Earned**



- 1** Masters In Education
- 7** University Bachelors in:
  - Economics
  - Social Work
  - Nursing
  - Indigenous Studies
  - Social Science
  - Human Kinetics
  - Anthropology

**Annual Total of Programs Completed**

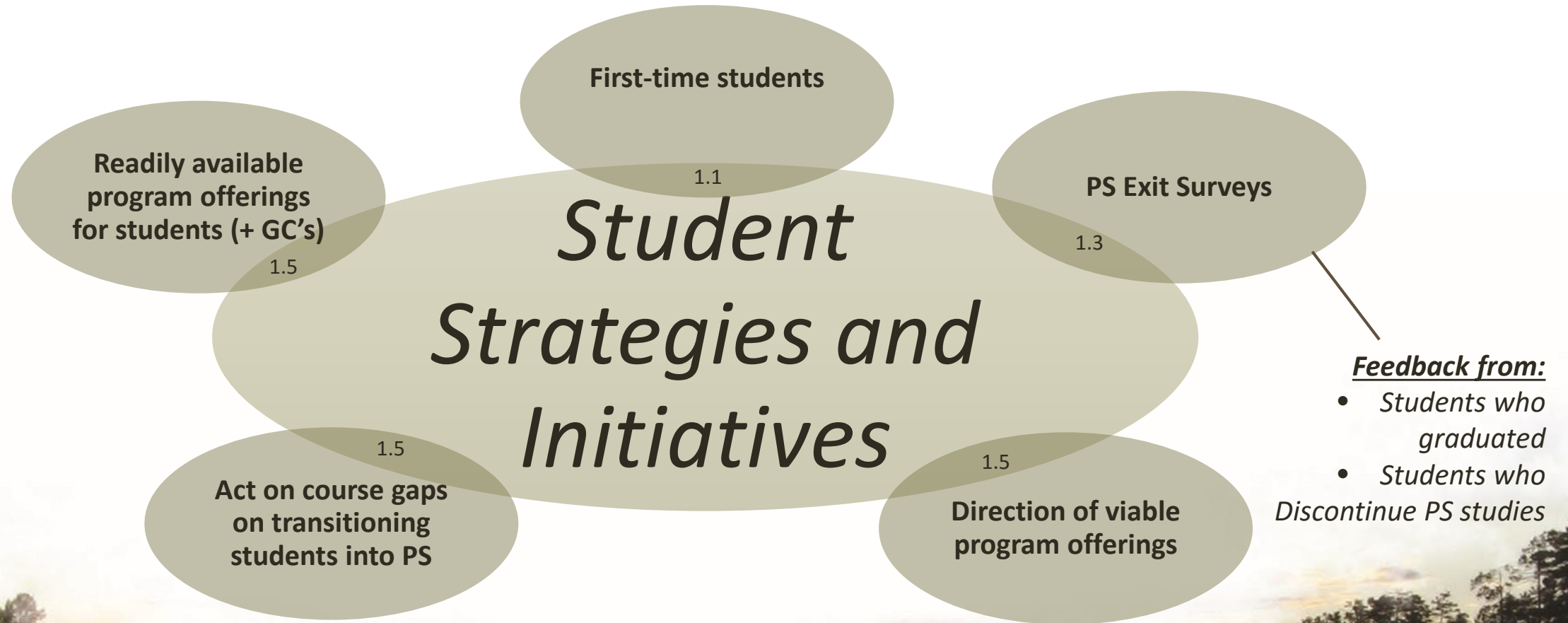
- At Diploma/Bachelor and Above
- Below Diploma/Bachelor level
- Vocational





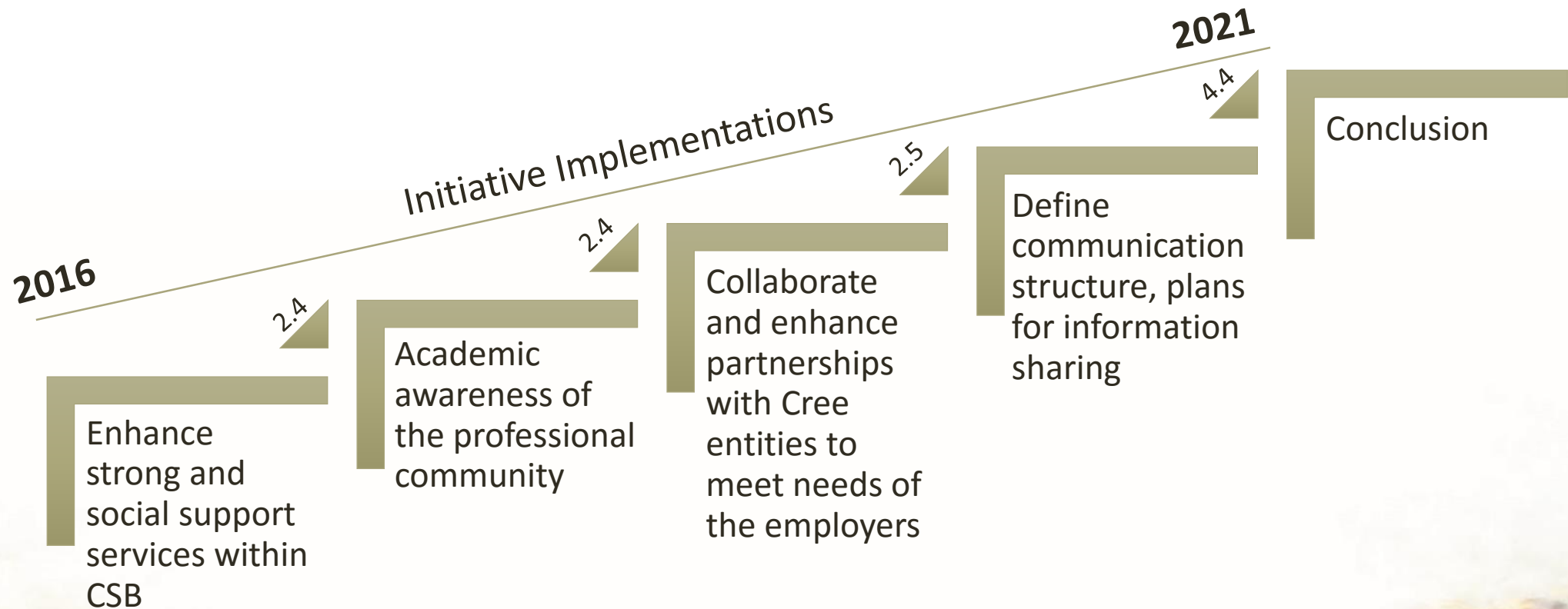
# 2016-2021 CSB PS Strategic Action Plan

## Student Success



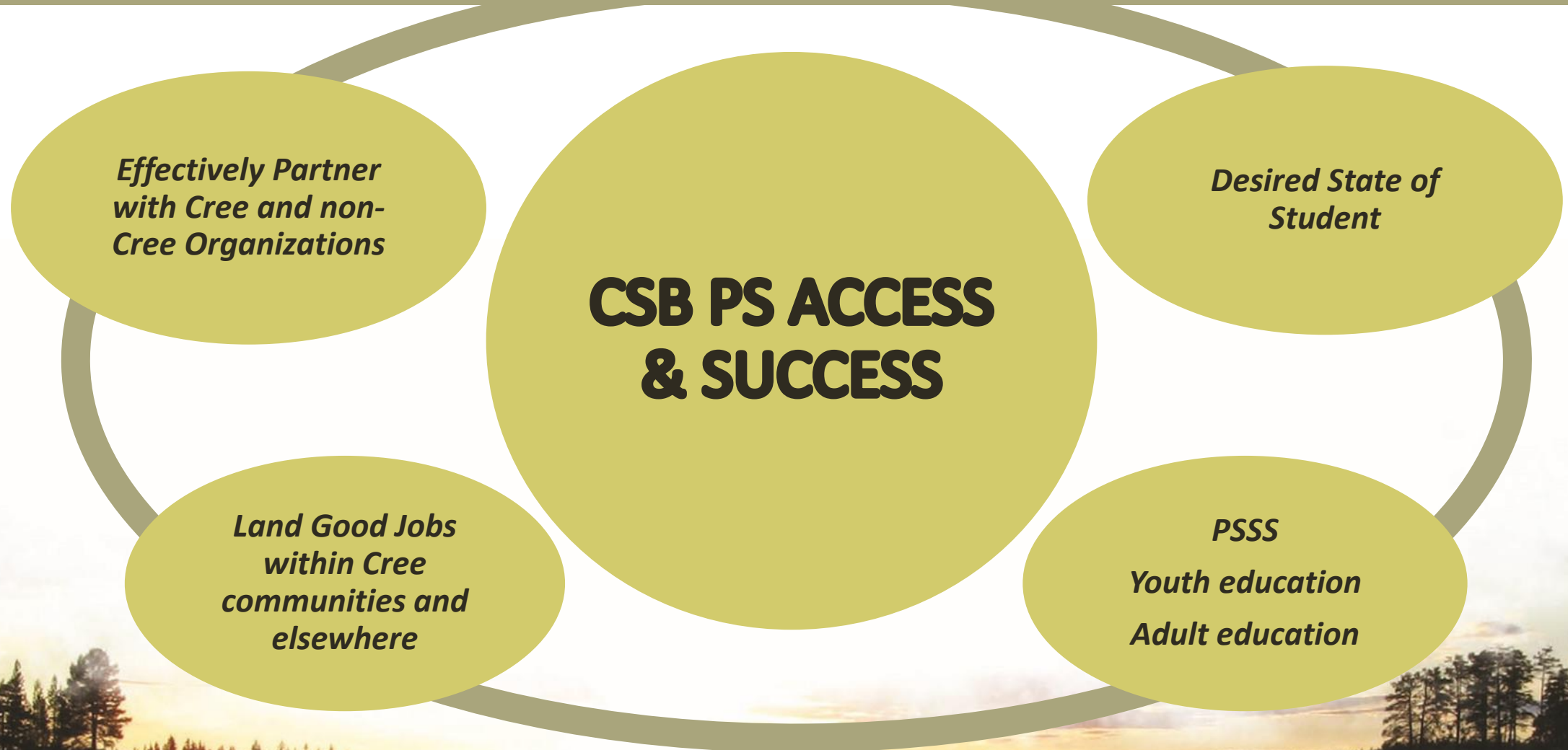


# Strategic Action Plan Initiatives





# Conclusion





# Questions?

Meegwetch!  
Thank you  
Merci

## **Contact**

*Jane L. Blacksmith, Director*

*[jblacksmith@cscree.qc.ca](mailto:jblacksmith@cscree.qc.ca)*

*1-800-463-7402*



# Students Registration Summary 2015-16

## *Fiscal Year versus Academic Year*

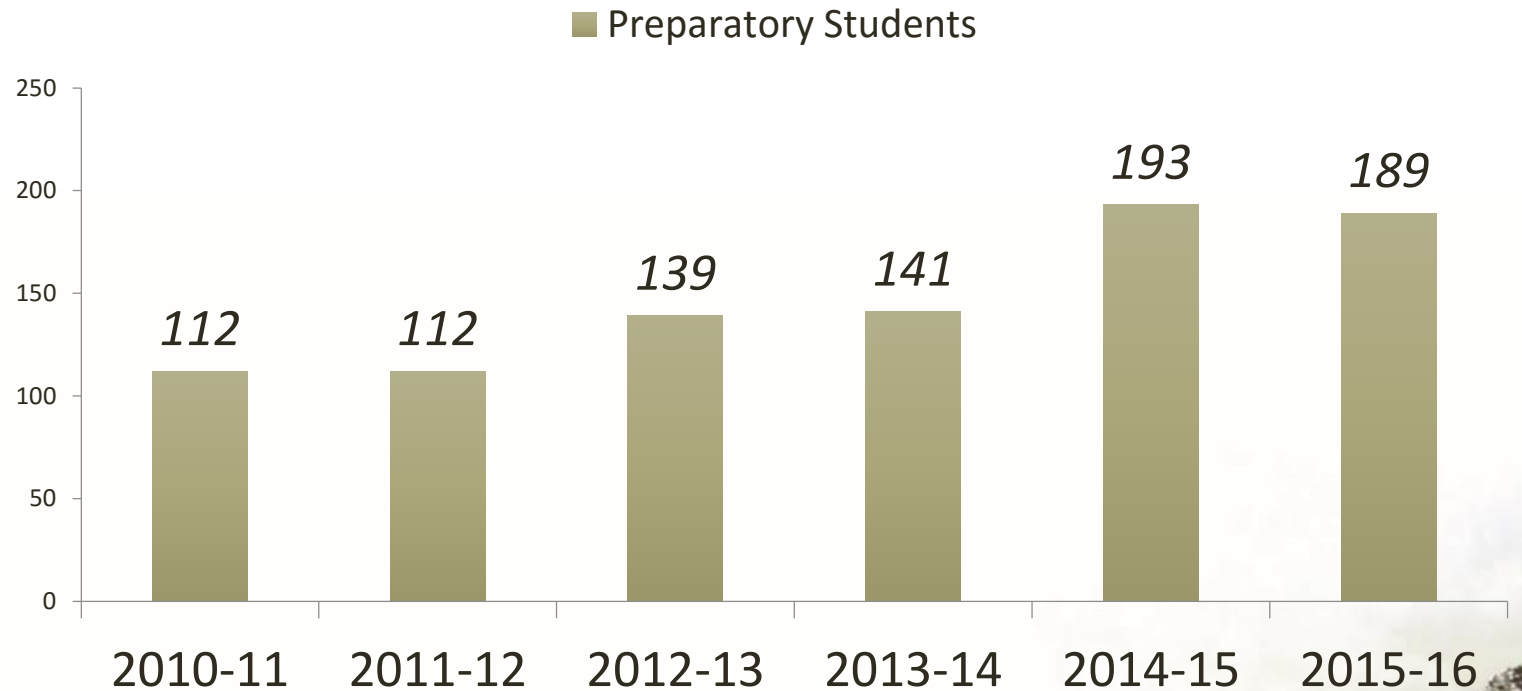
<u>23 Students</u>	<u>Registration End Date</u>	<u>Comments</u>
12543	August 31, 2015	Graduated at this date
15168	August 16, 2015	Withdrawn by School Board from Algonquin college (15-16 fall term begins Sep. 6 at the earliest i.e. campus)
17038	July 17, 2015	Withdrew herself in the summer of 14-15
18549	July 10, 2015	Withdrew himself in the summer of 14-15
19532	September 8, 2015	Graduated at this date
19873	July 3, 2015	Withdrew himself from the A.E.C program in the summer of 2014-15
20721	July 17, 2015	Graduated at this date
20755	July 3, 2015	Withdrew himself from the A.E.C program in the summer of 2014-15
20894	August 26, 2015	Graduated at this date
21141	August 18, 2015	Withdrew himself in the summer of 14-15
21456	August 21, 2015	Wither herself in the summer of 14-15
21825	August 31, 2015	Withdrew himself in the summer of 14-15
22381	August 16, 2015	Wither herself in the summer of 14-15
22467	July 17, 2015	Graduated at this date
22666	October 5, 2015	Graduated in trades recorded at this date (usually graduates from trades are provided at a later date)
22845	July 31, 2015	Graduated at this date
22868	August 16, 2015	Graduated at this date
24300	August 16, 2015	Withdrew herself in the summer of 14-15
24516	August 21, 2015	Withdrew herself in the summer of 14-15
24830	August 14, 2015	Graduated at this date
29491	September 30, 2015	Graduated at this date (Centre Polymetier, trades)
30851	August 14, 2015	Withdrew herself in the summer of 14-15



# CSB PSSS Preparatory Program Summary

## Preparatory Student Facts

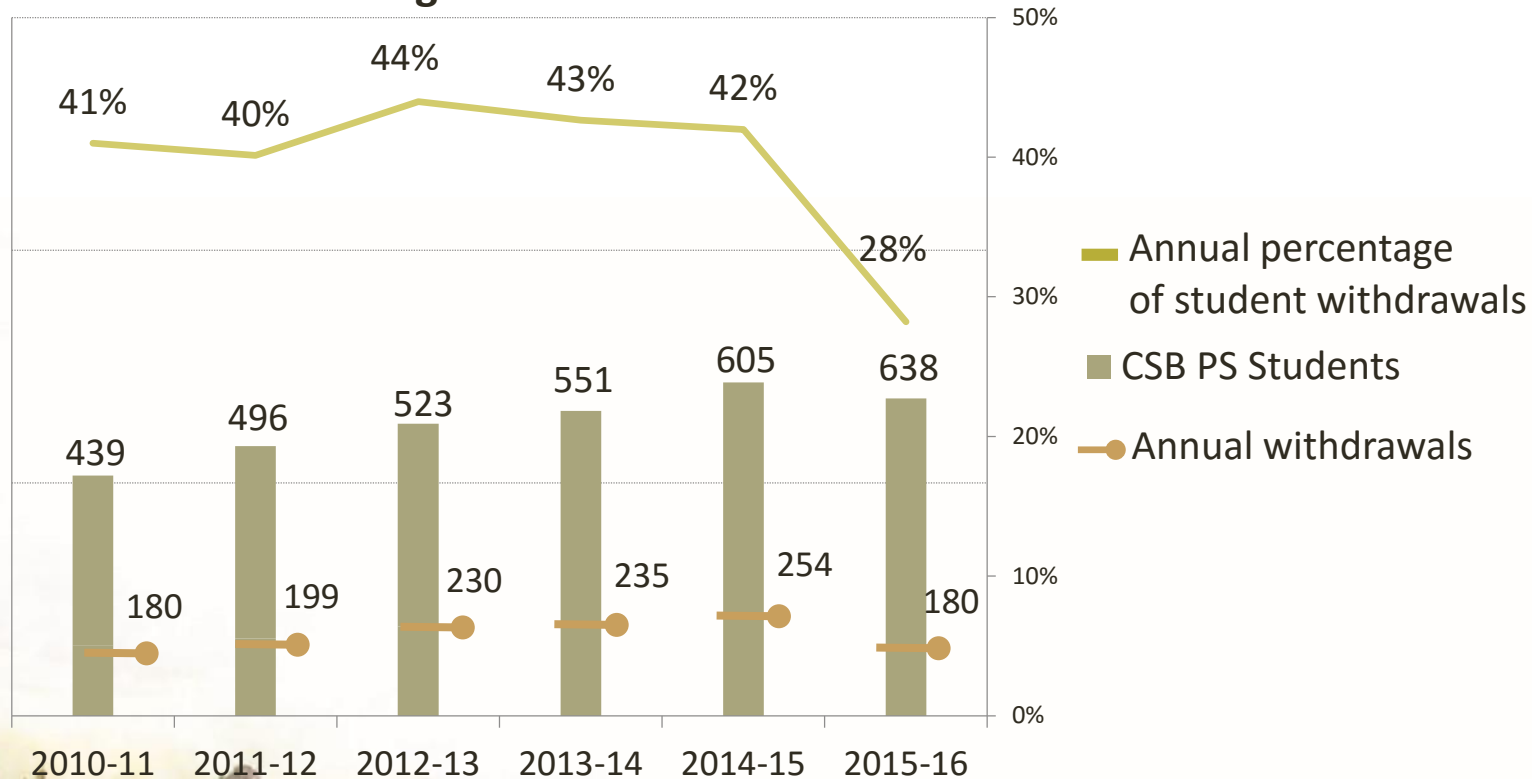
- There has been a slight decrease in preparatory students from last year.
- 76, which is over one third registered in G.A.S. English for Academic Purposes.
  - 74 @ Algonquin College
  - 1 @ Cambrian College
  - 1 @ George Brown College





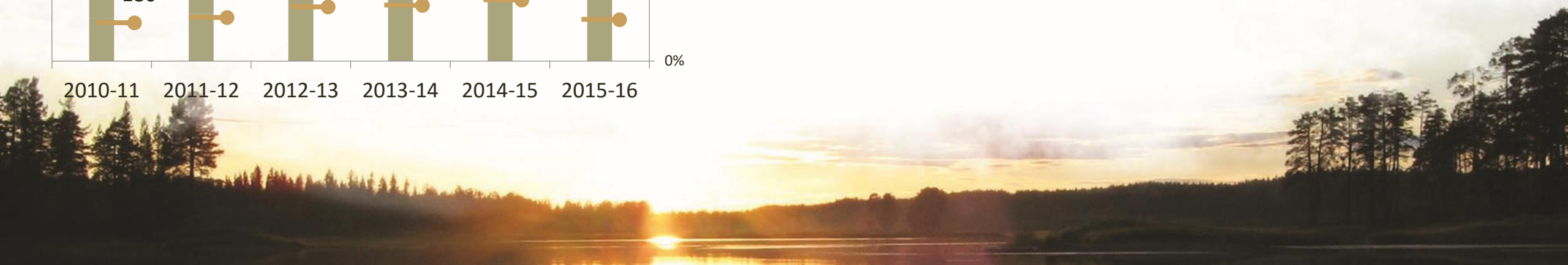
# CSB PSSS Withdrawals 2010-11 to 2015-16

Student withdrawals 2015-16 and Annual Percentage



This chart shows the number of student withdrawals CSB PS has endured over the last 6 years. The **annual percentage of withdrawals** has held steady, however last year we've experienced a major decrease of the number of student withdrawals proportional to our student body

- Annual percentage of student withdrawals
- CSB PS Students
- Annual withdrawals

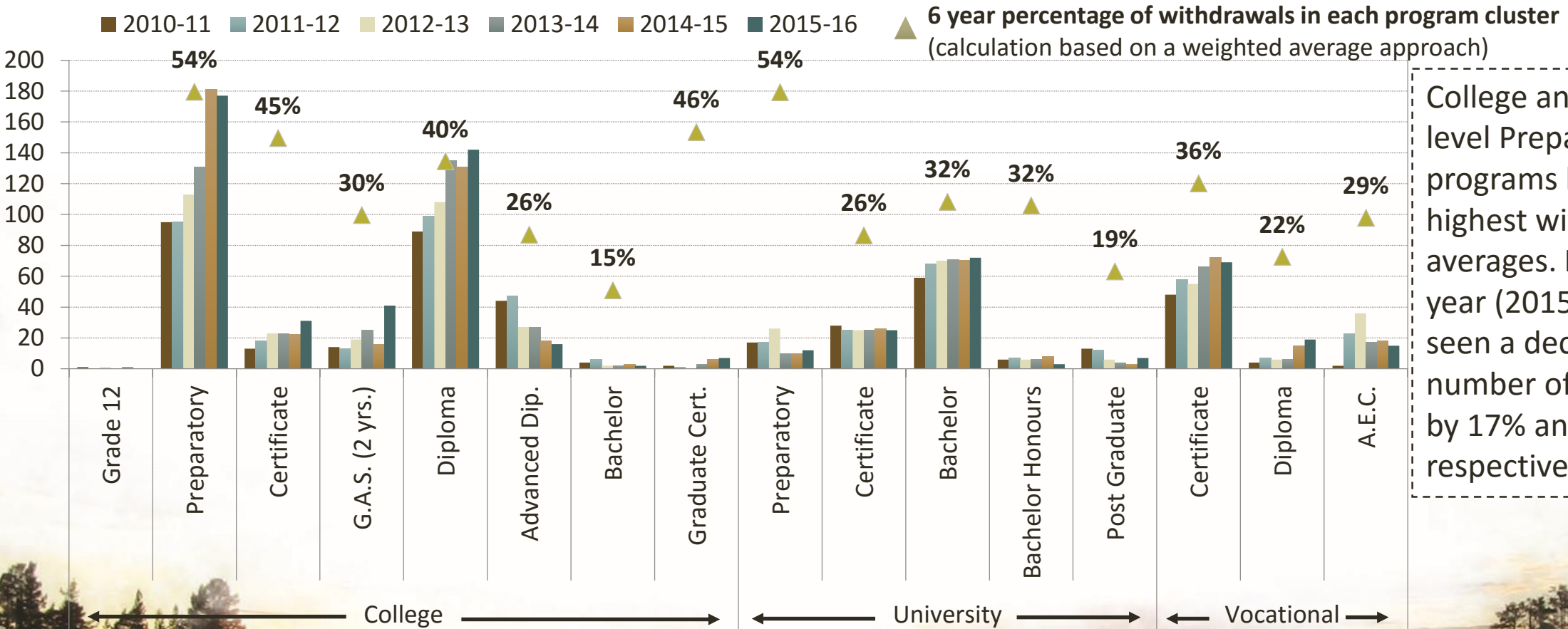




# CSB PSSS Program Clusters Defined

(Enrollments and 6-Year weighted average withdrawal average)

## List of Program Cluster Enrollments and Withdrawal Percentage



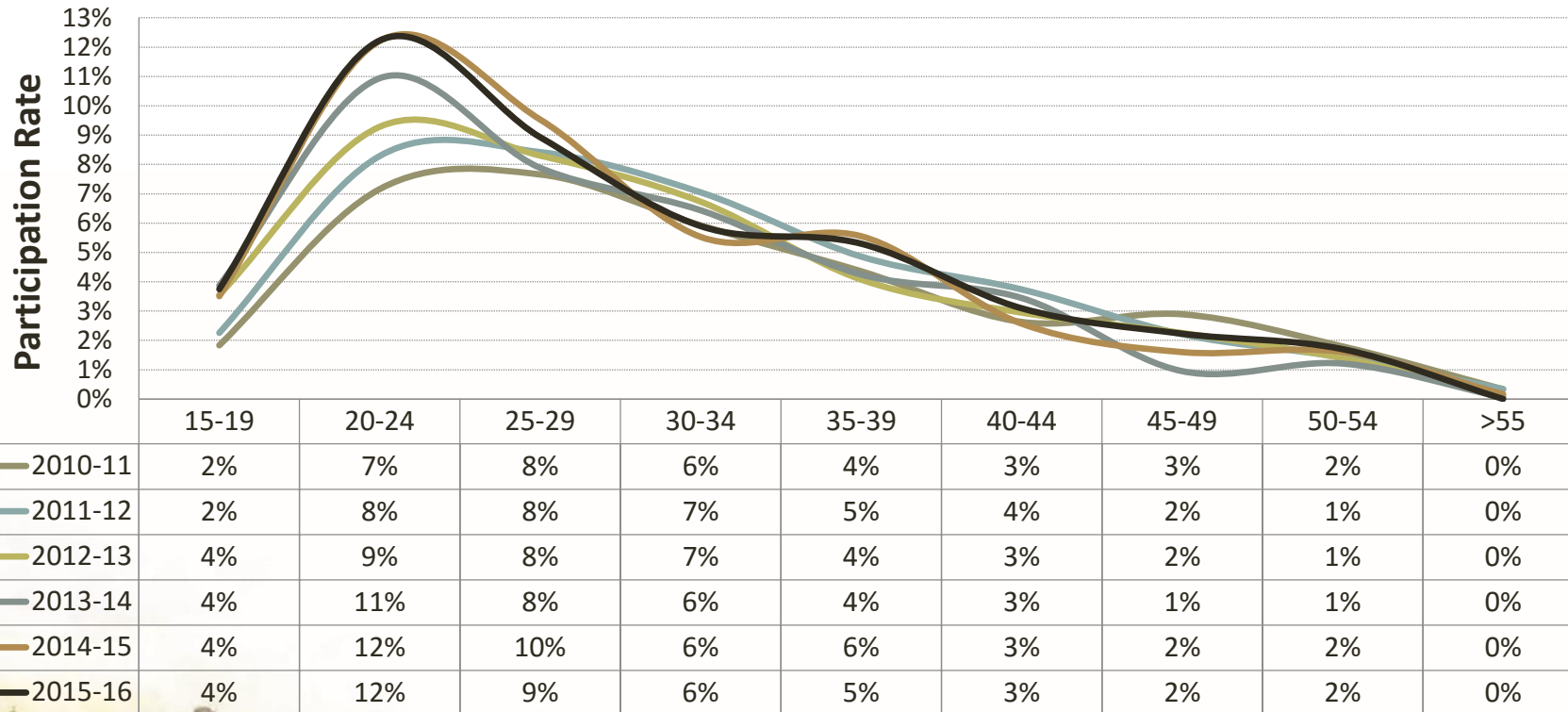
College and University level Preparatory programs hold the highest withdrawal averages. However, last year (2015-16), we have seen a decrease in the number of withdrawals by 17% and 46% respectively.



# CSB PS Program and Population Participation Rates

## CSB PS Participation Rates of Registered Cree Beneficiaries

(Population data source - MSSS Population Registry 2011-2016)



**6-year annual weighted average increase:**

Population of Cree Beneficiaries (ages 15-59) **2%**

CSB PS student body **8%**

